



# **Bombay Rayon Fashions Ltd (Under Corporate Insolvency Resolution Process)**

**Highlights**

**October 2022**



# Table of Content

| Sr No. | Title  | Page No |
|--------|--|---------|
| 1      | Company Overview                                 | 4       |
| 2      | Weaving Mill : Tarapur G-95                      | 8       |
| 3      | Trims Division, Bengaluru                        | 10      |
| 4      | Fabric Processing Mill, Bengaluru                | 12      |
| 5      | Unit 9 & Central Maintenance Division, Bengaluru | 16      |
| 6      | List of Major Assets                             | 19      |
| 7      | Creditors' Dues                                  | 22      |
| 8      | Number of Employees & Workmen                    | 24      |
| 9      | Investment in BRFL Textiles Pvt Ltd              | 26      |

# Company Overview

# Company Overview


| Particular                  | Details   |
|-----------------------------|---|
| <b>Company</b>              | Bombay Rayon Fashions Ltd   |
| <b>Promoter</b>             | Mr. Janardan Agrawal, Mr. Prashant Agrawal and Mr. Aman Agrawal   |
| <b>Listing Status</b>       | Listed on BSE & NSE, However, trading is currently suspended  |
| <b>Constitution</b>         | Public Limited Company  |
| <b>CIN</b>                  | L17120MH1992PLC066880   |
| <b>Incorporation date</b>   | 21 May 1992   |
| <b>Paid up capital</b>      | INR 317.48 crore  |
| <b>Registered Office</b>    | 3rd Floor, DLH Mangal Murti Building, Linking Road, Near Arya Samaj Mandir, Santacruz (West) Mumbai-400054  |
| <b>Key Business Areas</b>   | Engaged in a wide range of processing and weaving of fabrics and manufacture of garment accessories in Maharashtra and Karnataka. Also owns various assets and investments. |
| <b>CIRP Status</b>          | Corporate Insolvency Resolution Process (CIRP) initiated under Sec 9 of the Insolvency and Bankruptcy Code, 2016 (IBC) on 07 June 2022                                      |
| <b>Financial Statements</b> | Details as per financial statements available on the website <a href="http://www.bombayrayon.com">www.bombayrayon.com</a>   |

# Overview of Units of BRFL

| Unit/Plant           | Weaving (G-95) Tarapur  | Fabric Processing Mill Bengaluru   | Trims Division Bengaluru   |
|----------------------|---|--|--|
| Installed Capacity   | ~164,000 m/day  | ~100,000 m/day   | Varied   |
| Current Status       | Non-operational since Jun '22   | Non-operational since Nov' 2020, Plant is well maintained  | Operational  |
| Historical Clientele | Largely executing job work for BTPL (earlier Pearl Global, H&M, etc.)   | Orient Craft, Black Mango Fashions, Reliance Trends, etc.  | GAP, Levis, Abercrombie & Fitch, Guess, Primark, H&M, Jack & Jones, Only, Vero Moda, Zara, Polo, Wal-Mart                                    |
| Major Products       | Weaving of yarn into fabric   | Printed fabric, Dyed fabric, Digital printed fabric, Dyed base printed fabric  | Buttons, woven elastics, knitted elastics, laces, tapes, woven labels, printed labels, sewing threads, heat transfer labels                  |
| USP                  | <ul style="list-style-type: none"> <li>Rapier looms for linen and complex patterns and Airjet looms for mass production</li> <li>High quality yarn dyed fabric weaving</li> </ul> | <ul style="list-style-type: none"> <li>Known in the market for Satin and Poplin products</li> <li>High quality digital printing</li> </ul> | <ul style="list-style-type: none"> <li>One-stop solution for all trims products</li> <li>Manufactures products of global standard</li> </ul> |

# Key Highlights of Units

# List of Major Units

| Sr. No             | Particulars of Assets   | Type of Property               | ~Area*   | Location Map  |
|--------------------|---|--------------------------------|--|--|
| <b>Maharashtra</b> |   |                                |  |  |
| 1.                 | <b>Weaving Division</b> (G-95 unit) at Tarapur, Boisar, Maharashtra | Weaving unit                   | Land area- 12.70 acres/<br>Building area- 5,29,821 sq. ft. | <a href="https://goo.gl/maps/6SWZxkjXDryBhCrVA">https://goo.gl/maps/6SWZxkjXDryBhCrVA</a>        |
| <b>Karnataka</b>   |   |                                |  |  |
| 1.                 | <b>Trims Unit</b> at Doddaballapur, Bangalore                       | Garment Accessories Unit       | Land area- 2.43 acres/<br>Building area- 2,52,069 sq. ft.  | <a href="https://goo.gl/maps/CreFSFt3i2JZmdMH6">https://goo.gl/maps/CreFSFt3i2JZmdMH6</a>        |
| 2.                 | <b>Bangalore Processing Mill</b> at Doddaballapur, Bangalore        | Fabric Process House           | Land area- 15.09 acres/<br>Building area- 4,97,228 sq. ft. | <a href="https://goo.gl/maps/yWWKTAcfDf5rrZiy6">https://goo.gl/maps/yWWKTAcfDf5rrZiy6</a>        |
| 3.                 | <b>Unit-9 &amp; CMD</b> at Doddaballapur, Bangalore                 | (Garments Division/ Warehouse) | Land area- 9.47 acres/<br>Building area- 4,13,237 sq. ft   | <a href="https://goo.gl/maps/Jqbd4Td5eBfupJga8">https://goo.gl/maps/Jqbd4Td5eBfupJga8</a>        |

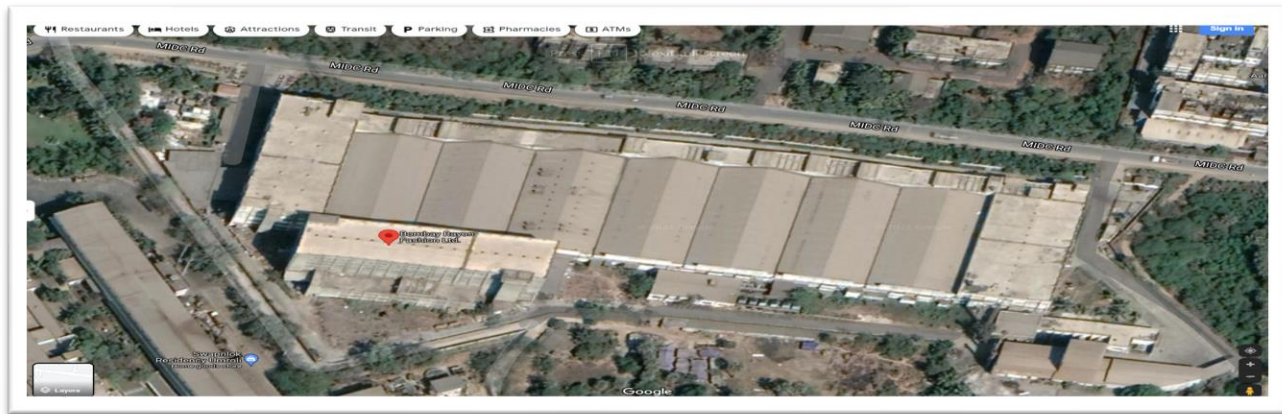
\*Indicative

## Key Highlights – Weaving Mill : Tarapur G-95

1. Spread over ~12 acres with building area of ~ > 5 lakhs sq ft. at Tarapur, Boisar, District Palghar, Maharashtra
2. Weaving of yarn into fabric with Rapier looms for linen and complex patterns and Airjet looms for mass production
3. Equipped with the best of technology from selected global suppliers. On the preparatory side, the warping and sizing machines have been taken from the leader in this segment viz. Karl Mayer, Germany. While in the fabric formation stage, the Unit has installed a mix of various technologies to ensure flexibility and diversity in the product range.
4. Further, the Company has installed Airjet looms in its new set-up which are known for higher productivity and design suitability whereas in earlier set-up they have Rapiers and projectile looms which are suitable for heavier fabrics. Unit has 452 nos. weaving machines - 88 Rapier looms (Picanol) and 364 Airjet looms (Picanol and Toyota)
5. High quality yarn dyed fabric weaving. The weaving units manufacture a wide range of fabric for top weight (lesser GSM) and bottom weights (higher GSM).
6. Carrying out job-work for other major textile companies for last two years
7. Currently, operations stopped since June 2022 on account of power disconnection



# Weaving (G-95) Tarapur – Facility Layout



| Machinery         | Nos. | Avg. Capacity (Mtrs/Day) | Make                       | Commissioned |
|-------------------|------|--------------------------|----------------------------|--------------|
| Rewinding M/c     | 24   | NA                       | Peass Mettler, Fadis       | 2010-2012    |
| Sectional Warping | 16   | 10,80,000                | Karl Mayer                 | 2009         |
| Direct Warping    | 1    | ~50,000                  | Karl Mayer                 | 2009         |
| Airjet Loom       | 364  | 300                      | Picanol (308), Toyota (56) | 2009         |
| Rapier Loom       | 88   | 180                      | Picanol                    | 1999, 2009   |

## Key Highlights – Trims Division (Garment Accessories Unit)

1. Facility based out of KIADB Apparel Park, Doddaballapur, Bengaluru and spread across a land area of around 9,816 sq mtrs and total constructed area (G+3) of around 17,600 sq. mtrs.
2. Has facilities to manufacture Polyester Buttons, Tapes & Elastics, Woven labels, printed labels, sewing threads, etc.
3. Unit has its list of all premium customers buying the product regularly . Because of its versatile capabilities it has got nomination of many big labels for their products
4. The property is located in KIADB Apparel Park, off SH-9, in close proximity to Doddaballapur town, in north Bengaluru in heart of KIADB Apparel Park; Well developed Apparel Park with number of prominent industrial units
5. The Apparel park is accessible by four lane road from Yelahanka; The property has a 22 Ft wide road in the front, for easy approach of all types of vehicles; Just 10 minutes drive from Dodaballapur Railway Station.
6. Apparel Park & surrounding locality with well developed infrastructure, Bank, Hospital, housing societies.

## Details of Machinery – Trims Division, Bengaluru

| INSTALLED CAPACITY |                                     |                     |               |  |
|--------------------|-------------------------------------|---------------------|---------------|--|
| Section            | Products                            | Unit of Measurement | Capacity /Day | Remarks  |
| Button             | Plastic Buttons                     | Gross (144 Nos)     | 34,722        | Laser Machines   |
| Sewing Thread      | Sewing Thread- (cone, Y cone, Tube) | Meter               | 400,00,000    | (Cone - 4000 *5000 Meter), (Box 1500 *10000 Meter) (Y cone 1000*5000 Meter) ( considered in Meter) |
| Elastic            | Elastic – Knitted                   | Meter               | 32,000        | Average Width 25 mm  |
|                    | Elastic – Woven                     | Meter               | 40,000        | Average Width 25 mm  |
|                    | Tape Woven                          |                     |               | Average Width 10 mm  |
|                    | Smoking Thread                      | Meter               | 800,000       |  |
| Label              | Label Printed                       | Pcs                 | 150,000       | Considered to be single color  |
|                    | Label Woven                         | Pcs                 | 90,000        |  |
| HTL                | Heat Transfer Sticker               | Pcs                 | 150,000       | Considered to be single color  |
| Chest printing     | Chest Printing                      | Pcs                 | 34,000        | Single Colour  |

## Key Highlights – Fabric Processing Mill, Bengaluru (1/2)

1. Unit is spread across about ~15 acres of land parcel with buildings.
2. Processing capacity of 1 lakh meter fabric per day. Depending upon the product mix the present set up can produce 1.2 lakh meter per day. (1.2 lakh meter was the maximum production achieved)
3. High Tech Imported machines with modern technology help to achieve optimum production and desired quality. This is supported by sustained quality standards using world class / international buyer approved laboratory with imported lab testing instruments.
4. Processing unit is almost linear in its material flow.
5. Strength of the plant is the superior Printing quality which is possible by “high profile Stork laser engraving machine”- precision engraving machine.

Contd.....

## Key Highlights – Fabric Processing Mill, Bengaluru (2/2)

6. Digital printing capacity of 1 lakh meter per month. Digital printing capabilities at this unit offers strategic advantage and higher yields.
7. Unit is closed since November 2020 due to disconnection of power
8. Unit and its plant and machinery is being well maintained by its staff
9. Has its own 3 MLD Effluent treatment plant (ETP) which is supported by 3 stage RO & Specific technology equipment MVRE. This helps in recycling the treated effluent water to reduce the freshwater requirement. Additionally, there is a Common ETP (CETP) operated by KIADB within 100 meters from the Unit. Unit effluent can be discharged to CETP by gravity flow.
10. Own power plant with capacity of 4.5 MW, sufficient to operate whole plant including Yarn dyeing.

# Bengaluru - Dodaballapur - Facility Layout



## Fabric Processing Mill

- ▶ Process House
- ▶ Weaving Division
- ▶ Yarn Dyeing Division
- ▶ Boiler House
- ▶ Sub-station
- ▶ Admin Building
- ▶ Captive Power Plant Capacity - 4.5 MW
- ▶ Effluent Treatment Facility
- ▶ RO Water Facility- 3 MLD
- ▶ Process Steam Boiler-1 - 2 TPH
- ▶ Process Steam Boiler-2- 15 TPH

## Trims

- ▶ Button division
- ▶ Elastic laces
- ▶ Printed & Weaving logo
- ▶ Yarn dyeing
- ▶ Mask manufacturing
- ▶ Chest printing

## Details of Machinery – Bangalore Process Mill

| Machinery                  | Nos. | ~Capacity (Mts/Min) | Make               |
|----------------------------|------|---------------------|--------------------|
| Batching machines          | 3    | 18                  | Ronson- 1, Yash- 2 |
| Singeing                   | 1    | 84                  | Osthoff            |
| Desize Washing             | 1    | 70                  | Benninger          |
| Continuous Bleaching Range | 1    | 66                  | Benninger          |
| Merceriser                 | 1    | 53                  | Benninger          |
| CDR                        | 1    | 38                  | Monforts           |
| Pad steamer                | 1    | 46                  | Benninger          |
| Rotary Printing            | 1    | 19                  | MHM                |
| Rotary Printing            | 1    | 18                  | MHMS               |
| Rotary Printing            | 1    | 19                  | Stormac            |
| Digital Printing           | 19   | Various             | Mimaki & Others    |
| Stenter 1& 2               | 2    | 5                   | Bruckner, Germany  |

## Key Highlights – Garment Unit/Warehouse -Unit 9 & Central Maintenance Division (CMD), Bengaluru

1. Plot area of ~9.5 acres with built up area of about 33,000 square meters
2. Main shed with high quality Proflex roof with heavy duty flooring
3. Unit utilized as Central Maintenance Division of BRFL in Bengaluru and is currently holding more than 5,000 machines
4. Unit can also accommodate garmenting activities
5. Karnataka Industrial Area Development Board provides basic infrastructure facilities like roads, water and drainage facilities
6. Doddaballapur railway station is at a distance of 3 kms and NH648 is at a distance of 5.7 kms




## Bengaluru - Unit 9 and CMD - Facility Layout



| Particulars             | Connectivity   |
|-------------------------|--|
| <b>Airport</b>          | Bangalore airport - located at a distance of 22 kms    |
| <b>Railway Station</b>  | Doddaballapur railway station - at a distance of 3 kms |
| <b>National Highway</b> | NH648 - at a distance of 5.7 kms                       |


# List of Major Assets

## List of Major Assets – (1/2)

| Sr.N                                     | Particulars of Assets   | Type of Property | ~Area *  | Location Map  |
|--|---|------------------|--|--|
| <b>List of properties in Maharashtra</b> |   |                  |  |  |
| 1  | G+3 floor building at <b>Hassa Mahal</b> , Lower Parel, Mumbai                | Land & Building  | Land - 534.96 sq. ft.<br>Building - 4,063.63 sq. ft. | <a href="https://goo.gl/maps/MvWjqeAF8XqVDUWH8">https://goo.gl/maps/MvWjqeAF8XqVDUWH8</a>        |
| 2  | Industrial land & building at <b>F-9</b> , MIDC, Tarapur                      | Land & Building  | Land - 4.87 acres<br>Building - 66,234 sq. ft.       | <a href="https://goo.gl/maps/m4HDjPqEkBV3VruFA">https://goo.gl/maps/m4HDjPqEkBV3VruFA</a>        |
| 3  | Industrial land & building at <b>C-11</b> , MIDC, Tarapur                     | Land & Building  | Land - 1.95 acres<br>Building - 42,088 sq. ft.       | <a href="https://goo.gl/maps/wBTw3e2NZEbksC22A">https://goo.gl/maps/wBTw3e2NZEbksC22A</a>        |
| 4  | Industrial plot at Plot - <b>RC-51</b> , Tarapur                              | Land & Building  | Land - 0.94 acres<br>Building - 39,547 sq. ft.       | <a href="https://goo.gl/maps/V8hqqVikh71SrAUu5">https://goo.gl/maps/V8hqqVikh71SrAUu5</a>        |
| 5  | Factory premises at Ichhalkaranji ( <b>Unit - 3</b> ), Kolhapur               | Land & Building  | Land - 3.05 acres<br>Building - 1,09,621.98 sq. ft.  | <a href="https://goo.gl/maps/3i2ypSnMTdMjiRrn7">https://goo.gl/maps/3i2ypSnMTdMjiRrn7</a>        |
| 6  | Factory premises at Plot No. 6 to 9, Phase-3, Kolhapur ( <b>Sizing unit</b> ) | Land & Building  | Land - 0.61 acres<br>Building - 17104.178 sq. ft.    | <a href="https://goo.gl/maps/Q58BoJgBxDHj97dH8">https://goo.gl/maps/Q58BoJgBxDHj97dH8</a>        |

\*Indicative

## List of Major Assets – (2/2)

| Sr. No                                 | Particulars of Assets   | Type of Property | ~Area*  | Location Map  |
|--|---|------------------|---|--|
| 7                                      | Factory Building at Sonale, <b>Bhiwandi</b>   | Building         | Land - 0.34 acre<br>Building - 39,070 sq. ft.                                   | <a href="https://goo.gl/maps/i.....uFkWKKejsW6M8">https://goo.gl/maps/i.....uFkWKKejsW6M8</a>    |
| 8                                      | Units at <b>Oberoï Garden</b> at 1 <sup>st</sup> & 6 <sup>th</sup> Floor at Chandivali, Andheri, Mumbai | Commercial Units | 1 <sup>st</sup> floor - 12,780 sq. ft.<br>6 <sup>th</sup> floor - 8,050 sq. ft. | <a href="https://goo.gl/maps/ZiUBtXzPVppE8pY8A">https://goo.gl/maps/ZiUBtXzPVppE8pY8A</a>        |
| 9                                      | 3 Units at 2 <sup>nd</sup> floor, <b>Tex Centre premises</b> , Chandivali, Andheri, Mumbai              | Commercial Units | 3,346 sq. ft.   | <a href="https://goo.gl/maps/4FssZVFrjTHAAgjA7">https://goo.gl/maps/4FssZVFrjTHAAgjA7</a>        |
| 10                                     | 3 Flats at Shree Residency, Islampur, Maharashtra ( <b>Islampur flats</b> )                             | Residential Flat | 3 Flats - 2,871 sq. ft.   | <a href="https://goo.gl/maps/wWYRoAaa9qV7AssE9">https://goo.gl/maps/wWYRoAaa9qV7AssE9</a>        |
| <b>List of properties in Karnataka</b> |   |                  |   |  |
| 1                                      | Factory premises <b>Unit-8</b> , Bangalore - Bidadi, Bangalore, Karnataka                               | Land & Building  | Land - 5.04 acre<br>Building - 1,36,765 sq. ft.                                 | <a href="https://goo.gl/maps/xmnBVtTeRGLAbHhV6">https://goo.gl/maps/xmnBVtTeRGLAbHhV6</a>        |
| 2                                      | Factory premises <b>Unit-13</b> , Bangalore - Mysore road, Bangalore, Karnataka                         | Land & Building  | Land - 2.28 acre<br>Building - 1,58,436 sq. ft.                                 | <a href="https://goo.gl/maps/AnhkiLxqyGKXADQK8">https://goo.gl/maps/AnhkiLxqyGKXADQK8</a>        |
| 3                                      | <b>Guest House</b> at 410, Jade Garden, Bangalore, Karnataka  | Land & Building  | Land - 0.13 Acre<br>Building - 5975 sq. ft.                                     | <a href="https://goo.gl/maps/WWppyy19h5bqaXrRA">https://goo.gl/maps/WWppyy19h5bqaXrRA</a>        |
| 4                                      | Flat No 6301 at <b>Prestige Monte Carlo</b> , Bangalore, Karnataka                                      | Residential Flat | Flat - 1815 sq. ft.   | <a href="https://goo.gl/maps/LEqtgeH7CfcRApMe6">https://goo.gl/maps/LEqtgeH7CfcRApMe6</a>        |

\*Indicative

# Creditors' Dues

## Creditors' Dues - As on 06 October 2022

| Type of creditor claim filed    | No. of Claims | Amount claimed (INR in Cr) | Amount admitted (INR in Cr) | Amount under verification (INR in Cr) | Amount not admitted (INR in Cr) |
|---------------------------------|---------------|----------------------------|-----------------------------|---------------------------------------|---------------------------------|
| Financial Creditors – Secured   | 2             | 6,691                      | 6,691                       | -                                     | -                               |
| Financial Creditors – Unsecured | 5             | 16                         | 16                          | -                                     | -                               |
| Operational Creditors           | 368           | 1,444                      | 317                         | 1,127                                 | -                               |
| Employees and workers           | 540           | 35                         | 4                           | 33                                    | -                               |
| <b>Total</b>                    | <b>915</b>    | <b>8,188</b>               | <b>7,028</b>                | <b>1,160</b>                          | <b>-</b>                        |

# Number of Employees & Workmen

## Number of Employees & Workmen as on 07.06.2022@

| Sr No | Unit              | Employee (Nos) | Workmen(Nos) |
|-------|-------------------|----------------|--------------|
| 1     | Tarapur G-95      | 97             | 717          |
| 2     | Bangalore – Mill* | 13             | -            |
| 3     | Bangalore – Trims | 18             | 131          |
| 4     | HO - Santacruz    | 32             | -            |
| 5     | Ichalkaranji      | 2              | -            |
| 6     | Latur             | 2              | -            |
| 7     | Bhiwandi          | 2              | -            |
| 8     | Trivandrum        | 1              | -            |
|       | <b>TOTAL</b>      | <b>167</b>     | <b>848</b>   |

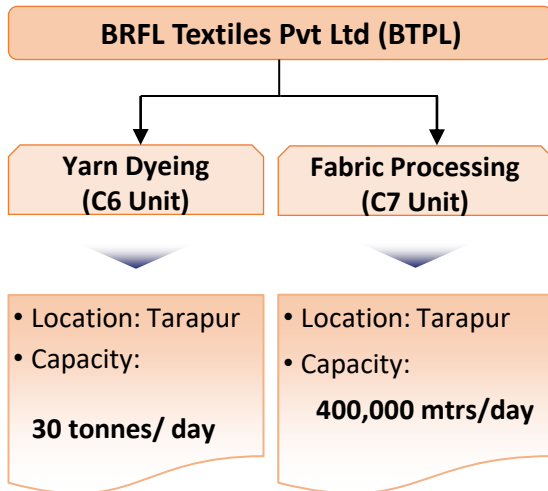
@Under Verification

\*Note – As per management, Bangalore Mill unit is closed since 30<sup>th</sup> November 2020 and there is a dispute on continuation of employment of workers and the management



# Investment in BRFL Textiles Pvt Ltd(BTPL)

# BRFL Textiles Private Limited (BTPL) - Overview



BTPL was formed in August 2020 by de-merging Yarn dyeing and fabric processing businesses of BRFL via slump sale.

BRFL currently holds 36.01% Equity/CCPS in BTPL and NCDs of BTPL which are pledged to JMFARC (~90%) & Axis Bank (~10%)



# Thank You

**Mr. Satish Kumar Gupta**

Resolution Professional

Bombay Rayon Fashions Ltd. (Under  
CIRP)

[brflcirp@gmail.com](mailto:brflcirp@gmail.com)

Third Floor, DLH Mangal Murti  
Building, Linking Road, Santacruz (W),  
Mumbai 400054, India



# Disclaimer

The information contained/disclosed in this document is as provided by the Management Personnel of Corporate Debtor (CD). No representation or warranty, express or implied, is given by CD, any of its officers, employees or its agents, the Resolution Professional as to the accuracy, authenticity or completeness of the contents of this document or any other document or information supplied, or which may be supplied at any time or any opinions or projections expressed herein or therein, nor is any such party under any obligation to update this document or correct any inaccuracies or omissions in it which may exist or become apparent. The Resolution Professional does not assume any personal responsibility for accuracy and correctness of the data provided herein.

This document and information contained herein is not intended to form the basis of any investment decision by a prospective resolution applicants. Interested parties should carry out their own due diligence, investigations and analysis of the CD and of the data referred to in this document and should consult their own advisers before submitting any Interest and must make its own independent assessment of the merits or otherwise of investing in the CD. Neither this document, nor anything contained herein, should form the basis of, or be relied upon in connection with any contract, agreement, undertaking, or any commitment or investment decision whatsoever.