



# **Bombay Rayon Fashions Ltd (Under Corporate Insolvency Resolution Process)**

**Highlights**

**January 2023**



# Disclaimer

The information contained/disclosed in this document is as provided by the Management Personnel of Corporate Debtor (CD). No representation or warranty, express or implied, is given by CD, any of its officers, employees or its agents, the Resolution Professional as to the accuracy, authenticity or completeness of the contents of this document or any other document or information supplied, or which may be supplied at any time or any opinions or projections expressed herein or therein, nor is any such party under any obligation to update this document or correct any inaccuracies or omissions in it which may exist or become apparent. The Resolution Professional does not assume any personal responsibility for accuracy and correctness of the data provided herein.

This document and information contained herein is not intended to form the basis of any investment decision by a prospective resolution applicants. Interested parties should carry out their own due diligence, investigations and analysis of the details of the CD and any of the data referred to in this document or otherwise should consult their own advisors before submitting any Interest and must make its own independent assessment of the merits or otherwise of investing in the CD. Neither this document, nor anything contained herein, should form the basis of, or be relied upon in connection with any contract, agreement, undertaking, or any commitment or investment decision whatsoever.

# Table of Content

Sr No.	Title	Page No
1	Company Overview	4
2	List of Assets for Invitation of Expression of Interest (IEOI)	8
3	Eligibility/Qualification Criteria & Other Terms for IEOI	10
4	Key Highlights of Assets (Category wise as per IEOI)	18
5	Creditors' Dues	58

# Company Overview

# Company Overview

Particular	Details
<b>Company</b>	Bombay Rayon Fashions Ltd
<b>Promoter</b>	Mr. Janardan Agrawal, Mr. Prashant Agrawal and Mr. Aman Agrawal
<b>Listing Status</b>	Listed on BSE & NSE, However, trading is currently suspended
<b>Constitution</b>	Public Limited Company
<b>CIN</b>	L17120MH1992PLC066880
<b>Incorporation date</b>	21 May 1992
<b>Paid up capital</b>	INR 317.48 crore
<b>Registered Office</b>	3rd Floor, DLH Mangal Murti Building, Linking Road, Near Arya Samaj Mandir, Santacruz (West) Mumbai-400054
<b>Key Business Areas</b>	Engaged in a wide range of processing and weaving of fabrics and manufacture of garment accessories in Maharashtra and Karnataka. Also owns various assets and investments.
<b>CIRP Status</b>	Corporate Insolvency Resolution Process (CIRP) initiated under Sec 9 of the Insolvency and Bankruptcy Code, 2016 (IBC) on 07 June 2022
<b>Financial Statements</b>	Details as per financial statements available on the website <a href="http://www.bombayrayon.com">www.bombayrayon.com</a>

# Overview of Major Units of BRFL

Unit/Plant	Weaving (G-95) Tarapur	Fabric Processing Mill Bengaluru	Trims Division Bengaluru
Installed Capacity	~164,000 m/day	~100,000 m/day	Varied
Current Status	Non-operational since Jun '22	Non-operational since Nov' 2020, Plant is well maintained	Operational
Historical Clientele	Largely executing job work for BTPL (earlier Pearl Global, H&M, etc.)	Orient Craft, Black Mango Fashions, Reliance Trends, etc.	GAP, Levis, Abercrombie & Fitch, Guess, Primark, H&M, Jack & Jones, Only, Vero Moda, Zara, Polo, Wal-Mart
Major Products	Weaving of yarn into fabric	Printed fabric, Dyed fabric, Digital printed fabric, Dyed base printed fabric	Buttons, woven elastics, knitted elastics, laces, tapes, woven labels, printed labels, sewing threads, heat transfer labels
USP	<ul style="list-style-type: none"> <li>Rapier looms for linen and complex patterns and Airjet looms for mass production</li> <li>High quality yarn dyed fabric weaving</li> </ul>	<ul style="list-style-type: none"> <li>Known in the market for Satin and Poplin products</li> <li>High quality digital printing</li> </ul>	<ul style="list-style-type: none"> <li>One-stop solution for all trims products</li> <li>Manufactures products of global standard</li> </ul>

# List of Assets for **Invitation of Expression of Interest**

# List of Assets for Invitation of Expression of Interest (1/2)

List of Assets	
<b>Category 1</b>	
1	Weaving Division at Tarapur (G-95), Boisar, Maharashtra
<b>Category 2</b>	
1	Industrial land & building at C-11, MIDC, Tarapur
2	Industrial plot at Plot - RC-51, Tarapur
3	Factory premises at Ichhalkaranji (Unit - 3), Kolhapur
4	Factory premises at Plot No. 6 to 9, Phase-3, Kolhapur (Sizing unit)
5	3 Flats at Shree Residency, Islampur, Maharashtra (Islampur flats)
<b>Category 3</b>	
1	Fabric Processing Mill, Doddaballapur, Bengaluru, Karnataka
<b>Category 4</b>	
1	Trims Unit, Doddaballapur, Bengaluru, Karnataka
2	2.1 MW windmill at Bellary, Karanataka
<b>Category 5</b>	
1	Unit-9 & CMD, Doddaballapur, Bengaluru, Karnataka
<b>Category 6</b>	
1	Equity/CCPS of BRFL Textile Pvt Ltd
<b>Category 7 (availability subject to Court/NCLT Order)</b>	
1	Factory premises Unit-8, Bangalore - Bidadi, Bangalore, Karnataka



## List of Assets for Invitation of Expression of Interest (2/2)

List of Assets	
<b>Category 8</b>	
1	Factory Building at Sonale, Bhiwandi
2	3 Units at 2 <sup>nd</sup> floor, Tex Centre premises, Chandivali, Andheri, Mumbai
3	Guest House, plot at 410, Jade Garden, Bangalore, Karnataka
4	Flat No 6301 at Prestige Monte Carlo, Bangalore, Karnataka
5	Units at Oberoi Garden at 1st & 6th Floor at Chandivali, Andheri, Mumbai
6	Land & Building (G+3 floor) at Hassa Mahal, Lower Parel, Mumbai
<b>Category 9 (Rest of Company with its tax losses &amp; inter alia the following assets)</b>	
1	Industrial plot No-A-1, Nanded, Maharashtra
2	Land at Kagal-Hatkanangale Five Star Industrial Area, Kolhapur
3	Industrial land & building at F-9, MIDC, Tarapur
4	7 flats at Provident Housing, Bangalore, Karnataka
5	Plant & Machinery at KINFRA Thiruvananthapuram, Kerala
6	Plant & Machinery at LITP Unit, Latur, Maharashtra
7	Plant & Machinery at IITP Unit at Islampur, Maharashtra
8	Plant & Machinery at Osmanabad, Maharashtra
<b>Category 10</b>	
1	NCDs (Non Convertible Debentures) of BRFL Textile Pvt Ltd.

# Eligibility/Qualification Criteria & Other Terms

## Eligibility Criteria for Prospective Resolution Applicant (PRAs) -1/2

The eligibility criteria for the PRAs, as approved by the CoC, in accordance with Section 25(2)(h) of the Code is as follows

### PROSPECTIVE RESOLUTION APPLICANT

1. A PRA may include an individual (being resident of India, foreign national, non- resident Indian or a person of Indian origin, as defined under Foreign Exchange Management Act, 1999 and any related amendments thereto), trust, co-operative society, private limited company, public limited company, sole proprietorship or a partnership firm (trust, co-operative society, private limited company, public limited company, sole proprietary firm or a partnership firm, collectively, **“Body Corporates”**), whether registered in India or outside India, whether singly or jointly (in which case each of whom), is eligible to invest in India under the laws of India.
2. A PRA may also include Financial Institutions (**“FI”**), Private Equity Funds, Venture Capital Funds, Investment Funds (Private Equity Funds, Venture Capital Funds, Investment Funds, collectively, **“Funds”**), Non- banking Finance Companies (**“NBFCs”**), Asset Reconstruction Companies (**“ARCs”**), Banks, Foreign Investment Institutions (**“FII”**) etc.
3. PRAs may also choose to form a consortium for the purpose of submission of the resolution plan (**“Consortium”**). Consortium shall mean any person acting together with another person as a joint bidder or joint venture (whether incorporated or not) for the purpose of submission of the EOI and resolution plan for the Corporate Debtor. In such a scenario the consortium would be required to additionally comply with the following criteria:

## Eligibility Criteria for Prospective Resolution Applicant (PRAs) – 2/2

- i. *The Consortium shall submit the copy of consortium agreement/ memorandum of understanding, if any, entered-into between the members of the Consortium (“**Consortium Members**”), setting out the respective obligations of the Consortium members.*
- ii. *The Consortium would be required to have a lead consortium member (“**Lead Member**”). Lead member must hold at least 26% equity/ minimum profit in the consortium and should have an authority to bind, represent and take decision for and on behalf of the consortium*
- iii. *All the other members of the Consortium would need to have a minimum profit/voting share of 10% in the Consortium.*
- iv. *Any PRA can participate in only 1 (one) Consortium and / or can submit only 1 (one) EOI.*
- v. *All the members of the Consortium shall be jointly and severally responsible for compliance with the terms of the Invitation*
- vi. *The EOI must contain the details of the members of the Consortium; following details may be provided: (i) Name of the member (ii) Type of entity (iii) percentage of share in the Consortium (iv) Name of the Lead Member;*
- vii. *No change in the composition of the Consortium shall be permitted after submission of the EOI.*

# Qualification Criteria for Prospective Resolution Applicant (PRAs) -1/3

*The financial / net worth criteria are as under*

*Rs in Crores*

Sr. No.	List of Assets of CD	Individuals & Body Corporates	FI, Funds, NBFCs, Banks, FIIs	FI, Funds, NBFCs, Banks, FIIs - Committed funds	Consortium - Individuals & Body Corporates	Consortium - FI, Funds, NBFCs, Banks, FIIs
Category 1						
1	Weaving Division at Tarapur (G-95), Boisar (Maharashtra)	20	50	50	20	50
Category 2						
1	Industrial land & building at C-11, MIDC, Tarapur	10	20	20	10	20
2	Industrial plot at Plot - RC-51,Tarapur					
3	Factory premises at Ichhalkaranji (Unit - 3), Kolhapur					
4	Factory premises at Plot No. 6 to 9, Phase-3, Kolhapur (Sizing unit)					
5	3 Flats at Shree Residency, Islampur, Maharashtra (Islampur flats)					
Category 3						
1	Fabric Processing Mill, Doddaballapur, Bengaluru (Karnataka)	20	50	50	20	50
Category 4						
1	Trims Unit, Doddaballapur, Bengaluru, Karnataka	10	20	20	10	20
2	2.1 MW windmill at Bellary, Karanataka					

# Qualification Criteria for Prospective Resolution Applicant (PRAs) - 2/3

The financial / net worth criteria are as under

Rs in Crores

Sr. No.	List of Assets of CD	Individuals & Body Corporates	FI, Funds, NBFCs, Banks, FIIs	FI, Funds, NBFCs, Banks, FIIs - Committed funds	Consortium - Individuals & Body Corporates	Consortium - FI, Funds, NBFCs, Banks, FIIs
<b>Category 5</b>						
1	Unit-9 & CMD, Doddaballapur, Bengaluru (Karnataka)	10	20	20	10	20
<b>Category 6</b>						
1	Equity/CCPS of BRFL Textile Pvt Ltd	50	100	100	50	100
<b>Category 7 (availability subject to NCLT Order)</b>						
1	Factory premises Unit-8, Bangalore - Bidadi, Bangalore, Karnataka	10	20	20	10	20
<b>Category 8 (To be bid individually)*</b>						
1	Factory Building at Sonale, Bhiwandi	0.50	1	1	0.50	1
2	3 Units at 2 <sup>nd</sup> floor, Tex Centre premises, Chandivali, Andheri, Mumbai	0.50	1	1	0.50	1
3	Guest House, plot at 410, Jade Garden, Bangalore, Karnataka	0.50	1	1	0.50	1
4	Flat No 6301 at Prestige Monte Carlo, Bangalore, Karnataka	0.50	1	1	0.50	1
5	Units at Oberoi Garden at 1st & 6th Floor at Chandivali, Andheri, Mumbai	5	10	10	5	10
6	Land & Building (G+3 floor) at Hassa Mahal, Lower Parel, Mumbai	0.50	1	1	0.50	1

# Qualification Criteria for Prospective Resolution Applicant (PRAs) -3/3

*The financial / net worth criteria are as under*

*Rs in Crores*

Sr. No.	List of Assets of CD	Individuals & Body Corporates	FI, Funds, NBFCs, Banks, FIIs	FI, Funds, NBFCs, Banks, FIIs - Committed funds	Consortium - Individuals & Body Corporates	Consortium - FI, Funds, NBFCs, Banks, FIIs
Category 9 (Rest of Company with its tax losses & inter alia the following assets)						
1	Industrial plot No-A-1, Nanded, Maharashtra	10	20	20	10	20
2	Land at Kagal-Hatkanangale Five Star Industrial Area, Kolhapur					
3	Industrial land & building at F-9, MIDC, Tarapur					
4	7 flats at Provident Housing, Bangalore, Karnataka					
5	P&M at KINFRA Thiruvananthapuram, Kerala					
6	P&M at LITP Unit, Latur, Maharashtra					
7	P&M at IITP Unit at Islampur, Maharashtra					
8	P&M at Osmanabad, Maharashtra					
Category 10						
1	NCD's of BRFL Textile Pvt Ltd	50	100	100	50	100

## Other Terms

1. Bidders can submit a Resolution plan for individual categories or a combination of categories
2. Bidders to allocate value to respective assets in individual categories
3. Category 8 cannot be bid as a one composite category, only individual assets to be bid\*
4. A Resolution Plan can be given combining all categories also
5. EMD will be Rs. 10 Lakhs standard for all the above categories even if bidding for multiple assets or all together except for category 6 for which EMD will be Rs. 10 Crores
6. Eligibility Criteria for ARCs will be as per the latest regulatory framework issued by RBI.
7. The PRAs can submit the EMD in the form of BG/NEFT/RTGS/DD.



# Key Highlights of Assets

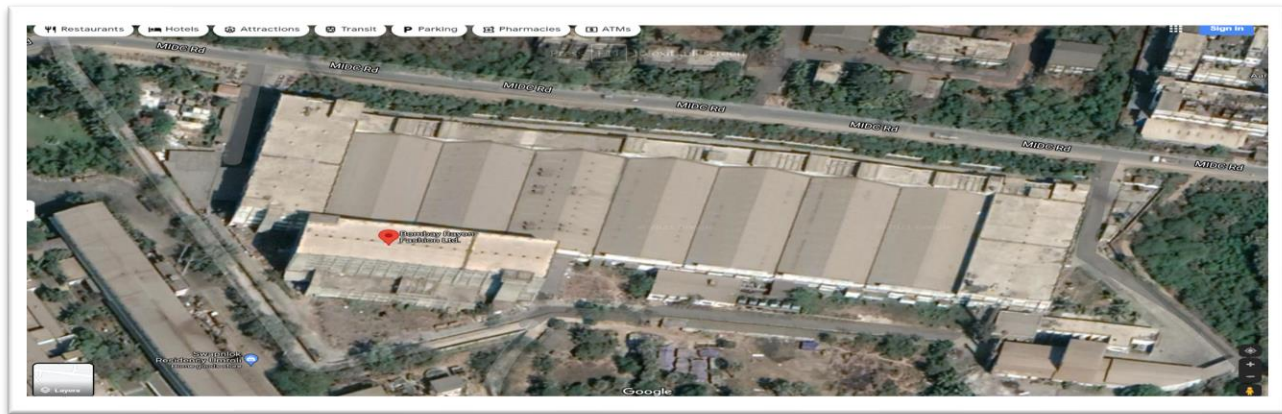
# Category 1

1. Weaving Division at Tarapur (G-95), Boisar, Maharashtra

## Key Highlights – Weaving Division at Tarapur (G-95), Boisar, Maharashtra

1. Spread over ~12 acres with building area of ~ > 5 lakhs sq ft. at Tarapur, Boisar, District Palghar, Maharashtra
2. Weaving of yarn into fabric with Rapier looms for linen and complex patterns and Airjet looms for mass production
3. Equipped with the best of technology from selected global suppliers. On the preparatory side, the warping and sizing machines have been taken from the leader in this segment viz. Karl Mayer, Germany. While in the fabric formation stage, the Unit has installed a mix of various technologies to ensure flexibility and diversity in the product range.
4. Further, the Company has installed Airjet looms in its new set-up which are known for higher productivity and design suitability whereas in earlier set-up they have Rapiers and projectile looms which are suitable for heavier fabrics. Unit has 452 nos. weaving machines - 88 Rapier looms (Picanol) and 364 Airjet looms (Picanol and Toyota)
5. High quality yarn dyed fabric weaving. The weaving units manufacture a wide range of fabric for top weight (lesser GSM) and bottom weights (higher GSM).
6. Was carrying out job-work for other major textile companies for last two years
7. Currently, unit is non operational since June 2022 on account of power disconnection

# Weaving Division at Tarapur (G-95), Boisar, Maharashtra – Facility Layout



Machinery	Nos.	Avg. Capacity (Mtrs/Day)	Make	Commissioned
Rewinding M/c	24	NA	Peass Mettler, Fadis	2010-2012
Sectional Warping	16	10,80,000	Karl Mayer	2009
Direct Warping	1	~50,000	Karl Mayer	2009
Airjet Loom	364	300	Picanol (308), Toyota (56)	2009
Rapier Loom	88	180	Picanol	1999, 2009

Particular	Description
<ul style="list-style-type: none"> <li>• Particular of Assets</li> <li>• Type of Asset</li> <li>• ~Area</li> <li>• Location Map</li> </ul>	<p><b>Weaving Division</b> (G-95 unit) at Tarapur, Boisar, Maharashtra</p> <p>Weaving unit</p> <p>Land area- 12.70 acres/ Building area- 5,29,821 sq. ft.</p> <p><a href="https://goo.gl/maps/6SWZxkjXDryBhCrVA">https://goo.gl/maps/6SWZxkjXDryBhCrVA</a></p>



## Category 2

1. Industrial land & building at C-11, MIDC, Tarapur, Maharashtra
2. Industrial plot at Plot - RC-51, Tarapur
3. Factory premises at Ichhalkaranji (Unit - 3), Kolhapur
4. Factory premises at Plot No. 6 to 9, Phase-3, Kolhapur (Sizing unit)
5. 3 Flats at Shree Residency, Islampur, Maharashtra (Islampur flats)

## 1. Industrial land & building at C-11, MIDC, Tarapur, Maharashtra

Particular	Description
<ul style="list-style-type: none"> <li>• Particular of Assets</li> <li>• Type of Asset</li> <li>• ~Area</li> <li>• Location Map</li> </ul>	<p>Industrial land &amp; building at <b>C-11</b>, MIDC, Tarapur</p> <p>Land &amp; Building</p> <p>Land - 1.95 acres, Building - 42,088 sq. ft.</p> <p><a href="https://goo.gl/maps/wBTw3e2NZEBksC22A">https://goo.gl/maps/wBTw3e2NZEBksC22A</a></p>



## 2. Industrial plot at Plot - RC-51,Tarapur, Maharashtra

Particular	Description
<ul style="list-style-type: none"> <li>Particular of Assets</li> <li>Type of Asset</li> <li>~Area</li> <li>Location Map</li> </ul>	Industrial plot at Plot - <b>RC-51</b> ,Tarapur Land & Building Land - 0.94 acres, Building - 39,547 sq. ft <a href="https://goo.gl/maps/V8hqqVikh71SrAUu5">https://goo.gl/maps/V8hqqVikh71SrAUu5</a>

## 3. Factory premises at Ichhalkaranji (Unit - 3), Kolhapur

Particular	Description
<ul style="list-style-type: none"> <li>Particular of Assets</li> <li>Type of Asset</li> <li>~Area</li> <li>Status</li> <li>Plant &amp; Machinery</li> <li>Location Map</li> </ul>	Factory premises at Ichhalkaranji ( <b>Unit - 3</b> ), Kolhapur Land & Building Land - 3.05 acres Building - 1,09,621.98 sq. ft. Non operational since February 2020 Winding Machine, Rabatex Warping Machine, Benninger Warping Machine, Direct Warping Macine, Airjet Looms, Utilities (Compressor, Steam Boiler, Scissors Lift Cap,2 Ton etc) & Electric Installation <a href="https://goo.gl/maps/3i2ypSnMTdMjiRrn7">https://goo.gl/maps/3i2ypSnMTdMjiRrn7</a>



#### 4. Factory premises at Plot No. 6 to 9, Phase-3, Kolhapur (Sizing unit)

Particular	Description
<ul style="list-style-type: none"> <li>Particular of Assets</li> <li>Type of Asset</li> <li>~Area</li> <li>Status</li> <li>Plant &amp; Machinery</li> <li>Location Map</li> </ul>	<p>Factory premises at Plot No. 6 to 9, Phase-3, Kolhapur (Sizing unit)</p> <p>Land &amp; Building</p> <p>Land - 0.61 acres, Building - 17104.178 sq. ft.</p> <p>Non operational since November 2016</p> <p>Warping Machine, LT Panel Setup, Boiler – 1.5T etc</p> <p><a href="https://goo.gl/maps/Q58BoJgBxDHj97dH8">https://goo.gl/maps/Q58BoJgBxDHj97dH8</a></p>

#### 5. Three Flats at Shree Residency, Islampur, Maharashtra (Islampur flats)

Particular	Description
<ul style="list-style-type: none"> <li>Particular of Assets</li> <li>Type of Asset</li> <li>~Area</li> <li>Location Map</li> </ul>	<p>3 Flats at Shree Residency, Islampur, Maharashtra (<b>Islampur flats</b>)</p> <p>Residential Flat</p> <p>3 Flats - 2,871 sq. ft.</p> <p><a href="https://goo.gl/maps/wWyRoAaa9qV7AssE9">https://goo.gl/maps/wWyRoAaa9qV7AssE9</a></p>

## Category 3

1. Fabric Processing Mill, Doddaballapur, Bengaluru, Karnataka

## Key Highlights – Fabric Processing Mill, Doddaballapur, Bengaluru, Karnataka (1/2)

1. Unit is spread across about ~15 acres of land parcel with buildings.
2. Processing capacity of 1 lakh meter fabric per day. Depending upon the product mix the present set up can produce 1.2 lakh meter per day.
3. High Tech Imported machines with modern technology help to achieve optimum production and desired quality. This is supported by sustained quality standards using world class / international buyer approved laboratory with imported lab testing instruments.
4. Processing unit is almost linear in its material flow.
5. Strength of the plant is the superior Printing quality which is possible by “high profile Stork laser engraving machine”- precision engraving machine.

Contd.....

## Key Highlights – Fabric Processing Mill, Doddaballapur, Bengaluru, Karnataka (2/2)

6. Digital printing capacity of 1 lakh meter per month. Digital printing capabilities at this unit offers strategic advantage and higher yields.
7. Unit is closed since November 2020 due to disconnection of power
8. Unit and its plant and machinery is being well maintained by its staff
9. Has its own 3 MLD Effluent treatment plant (ETP) which is supported by 3 stage RO & Specific technology equipment MVRE. This helps in recycling the treated effluent water to reduce the freshwater requirement. Additionally, there is a Common ETP (CETP) operated by KIADB within 100 meters from the Unit. Unit effluent can be discharged to CETP by gravity flow.

# Fabric Processing Mill, Doddaballapur, Bengaluru, Karnataka - Facility Layout



## Fabric Processing Mill

- ▶ Process House
- ▶ Weaving Division
- ▶ Yarn Dyeing Division
- ▶ Boiler House
- ▶ Sub-station
- ▶ Admin Building
- ▶ Captive Power Plant Capacity - 4.5 MW
- ▶ Effluent Treatment Facility
- ▶ RO Water Facility- 3 MLD
- ▶ Process Steam Boiler-1 - 2 TPH
- ▶ Process Steam Boiler-2- 15 TPH

## Details of Machinery – Fabric Processing Mill, Doddaballapur, Bengaluru, Karnataka

Machinery	Nos.	~Capacity (Mts/Min)	Make
Batching machines	3	18	Ronson- 1, Yash- 2
Singeing	1	84	Osthoff
Desize Washing	1	70	Benninger
Continuous Bleaching Range	1	66	Benninger
Merceriser	1	53	Benninger
CDR	1	38	Monforts
Pad steamer	1	46	Benninger
Rotary Printing	1	19	MHM
Rotary Printing	1	18	MHMS
Rotary Printing	1	19	Stormac
Digital Printing	19	Various	Mimaki & Others
Stenter 1& 2	2	5	Bruckner, Germany

Particular	Description
<ul style="list-style-type: none"> <li>• Particular of Assets</li> <li>• Type of Asset</li> <li>• ~Area</li> <li>• Location Map</li> </ul>	<p>Fabric Processing Mill, Doddaballapur, Bengaluru, Karnataka</p> <p>Fabric Process House</p> <p>Land area- 15.09 acres/ Building area- 4,97,228 sq. ft.</p> <p><a href="https://goo.gl/maps/yWWKTAcfDf5rrZiy6">https://goo.gl/maps/yWWKTAcfDf5rrZiy6</a></p>



## Category 4

1. Trims Unit, Doddaballapur, Bengaluru, Karnataka
2. 2.1 MW windmill at Bellary, Karnataka



# 1. Key Highlights – Trims Unit, Doddaballapur, Bengaluru, Karnataka

Particular	Description
<ul style="list-style-type: none"> <li>• Particular of Assets</li> <li>• Type of Asset</li> <li>• ~Area</li> <li>• Location Map</li> </ul>	<p><b>Trims Unit</b> at Doddaballapur, Bangalore</p> <p>Garment Accessories Unit</p> <p>Land area- 2.43 acres/ Building area- 2,52,069 sq.ft.</p> <p><a href="https://goo.gl/maps/CreFSFt3i2JZmdMH6">https://goo.gl/maps/CreFSFt3i2JZmdMH6</a></p>

1. Facility based out of KIADB Apparel Park, Doddaballapur, Bengaluru and spread across a land area of around ~2.43 acres
2. Has facilities to manufacture Polyester Buttons, Tapes & Elastics, Woven labels, printed labels, sewing threads, etc.
3. Unit has its list of all premium customers buying the product regularly . Because of its versatile capabilities it has got nomination of many big labels for their products
4. The property is located in KIADB Apparel Park, off SH-9, in close proximity to Doddaballapur town, in north Bengaluru in heart of KIADB Apparel Park; Well developed Apparel Park with number of prominent industrial units
5. The Apparel park is accessible by four lane road from Yelahanka; The property has a 22 Ft wide road in the front, for easy approach of all types of vehicles; Just 10 minutes drive from Dodaballapur Railway Station.
6. Apparel Park & surrounding locality with well developed infrastructure, Bank, Hospital, housing societies.

## Details of Machinery – Trims Division, Bengaluru

INSTALLED CAPACITY				
Section	Products	Unit of Measurement	Capacity /Day	Remarks
Button	Plastic Buttons	Gross (144 Nos)	34,722	Laser Machines
Sewing Thread	Sewing Thread- (cone, Y cone, Tube)	Meter	400,00,000	(Cone - 4000 *5000 Meter), (Box 1500 *10000 Meter) (Y cone 1000*5000 Meter) ( considered in Meter)
Elastic	Elastic – Knitted	Meter	32,000	Average Width 25 mm
	Elastic – Woven	Meter	40,000	Average Width 25 mm
	Tape Woven			Average Width 10 mm
	Smoking Thread	Meter	800,000	
Label	Label Printed	Pcs	150,000	Considered to be single color
	Label Woven	Pcs	90,000	
HTL	Heat Transfer Sticker	Pcs	150,000	Considered to be single color
Chest printing	Chest Printing	Pcs	34,000	Single Colour

## 2. 2.1 MW windmill at Bellary



1. Sub-lease deed was executed between Karnataka Renewable Energy Development Ltd and BRFL vide dated September 17, 2010
2. Extent of land is about 2 acres at Bellary, Karnataka. Lease over land was granted up to March 29, 2040.
3. Wheeling agreement was extended for 120 months (10 years) from December 2, 2020
4. Windmill is non operational since November 2021 due to non payment of O&M service charges

Location Map - <https://goo.gl/maps/e61ygCbdxJfEUptj7>

# Category 5

1. Unit-9 & CMD, Doddaballapur, Bengaluru, Karnataka

## Key Highlights – Unit 9 & Central Machinery Division (CMD), Bengaluru

1. Plot area of ~9.5 acres with built up area of about 33,000 square meters
2. Main shed with high quality Proflex roof with heavy duty flooring
3. Unit utilized as Central Maintenance Division of BRFL in Bengaluru and is currently holding more than 5,000 machines
4. Unit has no operations & can also accommodate garmenting activities.
5. Karnataka Industrial Area Development Board provides basic infrastructure facilities like roads, water and drainage facilities
6. Doddaballapur railway station is at a distance of 3 kms and NH648 is at a distance of 5.7 kms



Particular	Description
<ul style="list-style-type: none"> <li>Particular of Assets</li> <li>Type of Asset</li> <li>~Area</li> <li>Status</li> <li>Plant &amp; Machinery</li> <li>Location Map</li> </ul>	<p>Unit 9 &amp; Central Machinery Division (CMD), Bengaluru (Garments Division/ Warehouse)</p> <p>Land area- 9.47 acres/Building area- 4,13,237 sq. ft</p> <p>Non-operational since May 2018</p> <p>Single Needle UBT Machine, Pressing Table, Overlock machine, Single Needle Edge Cutter, Portable Boiler etc.</p> <p><a href="https://goo.gl/maps/Jqbd4Td5eBfupJga8">https://goo.gl/maps/Jqbd4Td5eBfupJga8</a></p>

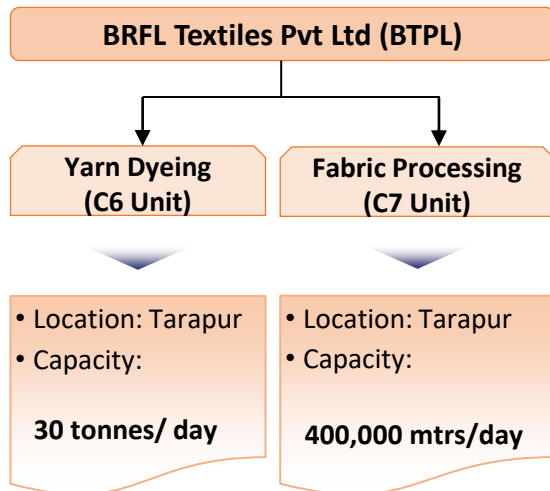


# Category 6

1. Equity/CCPS of BRFL Textile Pvt Ltd.



# BRFL Textiles Private Limited (BTPL) - Overview



- BTPL was formed in November 2020 by de-merging Yarn dyeing and fabric processing businesses of BRFL via slump sale.
- BRFL currently holds 36.01% Equity/CCPS in BTPL and NCDs of BTPL which are pledged to JMFArc (~90%) & Axis Bank (~10%)
- BTPL achieved total income of Rs 740.37 Crores for the year ended March 2022.

# Category 7

*(Availability subject to Court/NCLT Order)*

1. Factory premises Unit-8, Bangalore - Bidadi, Bangalore, Karnataka

## Factory premises Unit-8, Bangalore - Bidadi, Bangalore, Karnataka

Particular	Description
<ul style="list-style-type: none"> <li>Particular of Assets</li> <li>Type of Asset</li> <li>~Area</li> <li>Location Map</li> </ul>	<p>Factory premises <b>Unit-8</b>, Bangalore - Bidadi, Bangalore, Karnataka*</p> <p>Land &amp; Building</p> <p>Land - 5.04 acre/Building - 1,36,765 sq. ft.</p> <p><a href="https://goo.gl/maps/xmnBVtTeRGLAbHhV6">https://goo.gl/maps/xmnBVtTeRGLAbHhV6</a></p>

1. Subsequent to closure of unit in 2019, MOU for sale of the property was entered into with Mr. Neelakanta Naidu (Purchaser) for a total consideration of Rs. 25 Crore. Out of which, an advance payment of Rs. 5 Crore was remitted towards the total consideration. The buyer was to pay Rs.2.5 crore towards clearance of statutory dues and the balance amount of Rs.17.50 Crore was not remitted and per MOU
2. In the suit filed by Mr. Neelakanta Naidu against BRFL and JMFARC for the sale of the above the unit, the Principal Senior Judge & CJM, Ramanagara, Karnataka stayed the sale.
3. At the hearing dated 06<sup>th</sup> December 2022, the court was apprised that BRFL was undergoing CIRP and that no order of temporary injunction could have been passed against it, in violation of the moratorium

## Category 8

1. Factory Building at Sonale, Bhiwandi, Maharashtra
2. 3 Units at 2<sup>nd</sup> floor, Tex Centre premises, Chandivali, Andheri, Mumbai
3. Guest House, plot at 410, Jade Garden, Bangalore, Karnataka
4. Flat No 6301 at Prestige Monte Carlo, Bangalore, Karnataka
5. Units at Oberoi Garden at 1st & 6th Floor at Chandivali, Andheri, Mumbai
6. Land & Building (G+3 floor) at Hassa Mahal, Lower Parel, Mumbai

# 1. Factory Building at Sonale, Bhiwandi, Maharashtra

Particular	Description
<ul style="list-style-type: none"> <li>• Particular of Assets</li> <li>• Type of Asset</li> <li>• ~Area</li> <li>• Location Map</li> </ul>	<p>Factory Building at Sonale, Bhiwandi Building</p> <p>Land - 0.34 acre/Building - 39,070 sq. ft.</p> <p><a href="https://goo.gl/maps/ivm5uFkWKKejsw6M8">https://goo.gl/maps/ivm5uFkWKKejsw6M8</a></p>



## 2. Three units at 2nd floor, Tex Centre premises, Chandivali, Andheri, Mumbai

Particular	Description
<ul style="list-style-type: none"> <li>• Particular of Assets</li> <li>• Type of Asset</li> <li>• ~Area</li> <li>• Location Map</li> </ul>	<p>3 Units at 2nd floor, Tex Centre premises, Chandivali, Mumbai</p> <p>Commercial Units</p> <p>3,346 sq. ft.</p> <p><a href="https://goo.gl/maps/4FssZVFrjTHAAgiA7">https://goo.gl/maps/4FssZVFrjTHAAgiA7</a></p>



### 3. Guest House, plot at 410, Jade Garden, Bangalore, Karnataka

Particular	Description
<ul style="list-style-type: none"> <li>Particular of Assets</li> <li>Type of Asset</li> <li>~Area</li> <li>Location Map</li> </ul>	Guest House at 410, <b>Jade Garden</b> , Bangalore, Karnataka Land & Building Land - 0.13 Acre /Building - 5975 sq. ft. <a href="https://goo.gl/maps/WWppyy19h5bqaXrRA">https://goo.gl/maps/WWppyy19h5bqaXrRA</a>

### 4. Flat No 6301 at Prestige Monte Carlo, Bangalore, Karnataka

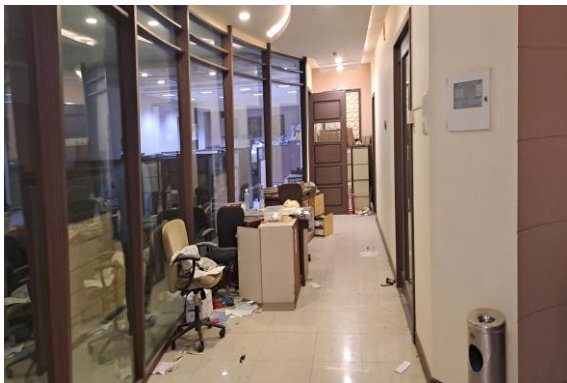
Particular	Description
<ul style="list-style-type: none"> <li>Particular of Assets</li> <li>Type of Asset</li> <li>~Area</li> <li>Location Map</li> </ul>	Flat No 6301 at <b>Prestige Monte Carlo</b> , Bangalore, Karnataka Residential Flat Flat - 1815 sq. ft. <a href="https://goo.gl/maps/LEqtgeH7CfcRApMe6">https://goo.gl/maps/LEqtgeH7CfcRApMe6</a>

### 6. Land & Building (G+3 floor) at Hassa Mahal, Lower Parel, Mumbai

Particular	Description
<ul style="list-style-type: none"> <li>Particular of Assets</li> <li>Type of Asset</li> <li>~Area</li> <li>Location Map</li> </ul>	G+3 floor building at <b>Hassa Mahal</b> , Lower Parel, Mumbai Land & Building Land - 534.96 sq. ft./Building - 4,063.63 sq. ft. <a href="https://goo.gl/maps/MvWjqeAF8XqVDUWH8">https://goo.gl/maps/MvWjqeAF8XqVDUWH8</a>

## 5. Units at Oberoi Garden at 1st & 6th Floor at Chandivali, Andheri, Mumbai

Particular	Description
<ul style="list-style-type: none"> <li>• Particular of Assets</li> <li>• Type of Asset</li> <li>• ~Area</li> <li>• Location Map</li> </ul>	<p>Units at Oberoi Garden at 1st &amp; 6th Floor at Chandivali, Mumbai</p> <p>Commercial Units</p> <p>1st floor - 12,780 sq. ft./6th floor - 8,050 sq. ft</p> <p><a href="https://goo.gl/maps/ZiUBtXzPVppE8pY8A">https://goo.gl/maps/ZiUBtXzPVppE8pY8A</a></p>





## Category 9\*

***(Rest of Company with its tax losses & inter alia the following assets)***

1. Industrial plot No-A-1, Nanded, Maharashtra
2. Land at Kagal-Hatkanangale Five Star Industrial Area, Kolhapur
3. Industrial land & building at F-9, MIDC, Tarapur
4. 7 flats at Provident Housing, Bangalore, Karnataka
5. Plant & Machinery at KINFRA Thiruvananthapuram, Kerala
6. Plant & Machinery at LITP Unit, Latur, Maharashtra
7. Plant & Machinery at IITP Unit at Islampur, Maharashtra
8. Plant & Machinery at Osmanabad, Maharashtra

*\*Subject to disputes/litigations etc.*

## 1. Industrial plot No-A-1, Nanded, Maharashtra\*

Particular	Description
<ul style="list-style-type: none"> <li>Particular of Assets</li> <li>Type of Asset</li> <li>~Area</li> <li>Location Map</li> </ul>	Industrial plot <b>No-A-1</b> , Nanded, Maharashtra Land Land - 33.26 acres <a href="https://goo.gl/maps/7SopY7t6aKuJC8MM9">https://goo.gl/maps/7SopY7t6aKuJC8MM9</a>

## 2. Land at Kagal-Hatkanangale Five Star Industrial Area, Kolhapur\*

Particular	Description
<ul style="list-style-type: none"> <li>Particular of Assets</li> <li>Type of Asset</li> <li>~Area</li> <li>Location Map</li> </ul>	Land at Kagal-Hatkanangale Five Star Industrial Area, Kolhapur Land Land – 92.31 acres <a href="https://goo.gl/maps/VtUcxRWxDH6mHd186">https://goo.gl/maps/VtUcxRWxDH6mHd186</a>

\* *Subject to disputes/litigations etc.*

### 3. Industrial land & building at F-9, MIDC, Tarapur (1/2)

1. MIDC had issued a termination notice to the Corporate Debtor on 15 June 2015 (Termination Notice) with respect to the lease of Plot F-9 in Tarapur Industrial Area, Kolvade, Thane (Plot F-9)
2. The Corporate Debtor had filed an appeal challenging the termination of the lease in the District Court, Thane, Palghar.
3. At the hearing dated 09<sup>th</sup> January 2023, the NCLT granted status quo with respect to any action taken by MIDC on F-9 Plot

Particular	Description
<ul style="list-style-type: none"> <li>• Particular of Assets</li> <li>• Type of Asset</li> <li>• ~Area</li> <li>• Location Map</li> </ul>	<p>Industrial land &amp; building at <b>F-9</b>, MIDC, Tarapur</p> <p>Land &amp; Building</p> <p>Land - 4.87 acres Building - 66,234 sq. ft</p> <p><a href="https://goo.gl/maps/m4HDjPqEkBV3VruFA">https://goo.gl/maps/m4HDjPqEkBV3VruFA</a></p>



## 4. 7 flats at Provident Housing, Bangalore, Karnataka

Particular	Description
<ul style="list-style-type: none"> <li>Particular of Assets</li> <li>Type of Asset</li> <li>~Area</li> <li>Location Map</li> </ul>	<p><b>7 flats at Provident Housing, Bangalore, Karnataka*</b></p> <p>Residential Flat</p> <p>7 Flats - 5,914.98 sq. ft.</p> <p><a href="https://goo.gl/maps/d9ogiRQHynWraXJa9">https://goo.gl/maps/d9ogiRQHynWraXJa9</a></p>

## 5. Plant & Machinery at KINFRA Thiruvananthapuram, Kerala

Particular	Description
<ul style="list-style-type: none"> <li>Particular of Assets</li> <li>Status</li> <li>Plant &amp; Machinery</li> <li>Location Map</li> </ul>	<p>Movable assets (P&amp;M) at rented premises situated at KINFRA Thiruvananthapuram, Kerala</p> <p>Non operational since January 2019</p> <p>Cutting Machine, Fusing Machine, Pressing Table, Sewing Machine, SNAP Button Machine, Turning Machine, Steam Iron etc</p> <p><a href="https://goo.gl/maps/U8iFW8B2LDKXkq7G8">https://goo.gl/maps/U8iFW8B2LDKXkq7G8</a></p>

## 6. Plant & Machinery at LITP Unit, Latur, Maharashtra

Particular	Description
<ul style="list-style-type: none"> <li>Particular of Assets</li> <li>Status</li> <li>Plant &amp; Machinery</li> <li>Location Map</li> </ul>	<p>Plant &amp; Machinery at LITP Unit, Latur, Maharashtra</p> <p>Non operational since March 2014</p> <p>Fusing Machine, Sewing Machine, Electric Installation &amp; Fitting, Other utilities</p> <p><a href="https://goo.gl/maps/vZmzbgyqABc8m7ne7">https://goo.gl/maps/vZmzbgyqABc8m7ne7</a></p>

## 7. Plant & Machinery at IITP Unit at Islampur, Maharashtra

Particular	Description
<ul style="list-style-type: none"> <li>Particular of Assets</li> <li>Status</li> <li>Plant &amp; Machinery</li> <li>Location Map</li> </ul>	<p>Plant &amp; Machinery at IITP Unit at Islampur, Maharashtra</p> <p>Non operational since March 2019</p> <p>Sewing Machine, Boiler, Cutting Machine, Drier, Edge &amp; End cutter machine, Pressing Table, Spreader Machine, looms, Stabiliser, Pump, Pallette, Cleaning overhead machines etc.</p> <p><a href="https://goo.gl/maps/veN5vwQRtw8BJu3G6">https://goo.gl/maps/veN5vwQRtw8BJu3G6</a></p>

## 8. Plant & Machinery at Osmanabad, Maharashtra

Particular	Description
<ul style="list-style-type: none"> <li>Particular of Assets</li> <li>Status</li> <li>Plant &amp; Machinery</li> <li>Location Map</li> </ul>	<p>Plant &amp; Machinery at Osmanabad, Maharashtra</p> <p>Non operational since March 2013</p> <p>Single &amp; Double needle lock stitch machine, Thread over lock machine, Collar Turning machine etc.</p> <p><a href="https://maps.app.goo.gl/eGQtrv2jzNedc5tj6">https://maps.app.goo.gl/eGQtrv2jzNedc5tj6</a></p>

# Category 10

1. Non Convertible Debentures (NCDs) of BRFL Textile Pvt. Ltd

## NCDs of BRFL Textile Pvt Ltd

1. Bombay Rayon Fashions Ltd hold 6,00,000 non convertible debentures of BRFL Textile Pvt Ltd (BTPL) of the face value of Rs 1000/- (Rupees One Thousand Only) each aggregating to Rs 60,00,00,000/- as per Trust Deed dated the 26<sup>th</sup> November 2020
2. NCDs carries an interest at the rate of 0.00001% p.a payable annually and it is redeemable at the end of 10 years
3. BTPL has created second ranking charge, subordinate to the first ranking charge created in favor of the working capital lender, over all its current assets and movable assets.
4. BTPL has also created mortgage over its property being (i) Plot No C-6 admeasuring 20,310 sq. mtrs and Plot No C-7 admeasuring sq. mtrs situated at Tarapur Industrial Area , Village Salwad, Taluka Palghar District Thane.
5. SBI CAP Trustee Company Ltd, has been appointed as a debenture Trustee for the benefit of Debenture Holders.



# Creditors' Dues

## Creditors' Dues - As on 22 December 2022

Type of creditor claim filed	Nos	Amount claimed (INR in Cr)	Amount admitted (INR in Cr)	Amount under verification (INR in Cr)	Amount of contingent claims	Amount not admitted (INR in Cr)
Financial Creditors – Secured	2	6,691	6,691	-	-	-
Financial Creditors – Unsecured	5	16	16	-	-	-
Operational Creditors	412	1637	513	643	417	64
Employees and workers	2265	41	15.26	25	-	0.94
<b>Total</b>	<b>2684</b>	<b>8385</b>	<b>7236</b>	<b>668</b>	<b>417</b>	<b>65.06</b>



# Thank You

**Mr. Satish Kumar Gupta**

Resolution Professional

Bombay Rayon Fashions Ltd.

(Under CIRP)

[brflcirp@gmail.com](mailto:brflcirp@gmail.com)

Third Floor, DLH Mangal Murti  
Building, Linking Road, Santacruz (W),  
Mumbai 400054, India

